

Technical Memorandum

07 February 2023

To	Jessica Cooper	Contact No.	+61 6113 3336
Copy to	Tim Fairbrother	Email	jessica.cooper@cwpm.com.au
From	Tristan Yeats	Project No.	12591591
Project Name	Cooma Hospital Key Worker Accommodation		
Subject	Traffic Report		

1. Introduction

1.1 Purpose of this Memorandum

Health Infrastructure NSW have commissioned GHD Pty Ltd (GHD) to provide support for new key worker accommodation buildings to support Cooma Hospital located on Bent Street, Cooma. The following report assesses the permanent traffic impacts during operation of the site upon construction completion as well as the temporary traffic impacts to the area during construction.

1.2 Scope and limitations

The opinions, conclusions and any recommendations in this report are based on the conditions encountered during a site inspection conducted on Tuesday, 16 August 2022 and information reviewed at the date of preparation of the report. GHD Pty Ltd has no responsibility or obligation to update this document to account for events or changes occurring after the date of its creation.

This technical memorandum has been prepared by GHD for NSW Government Health Infrastructure. It is not prepared as, and is not represented to be, a deliverable suitable for reliance by any person for any purpose. It is not intended for circulation or incorporation into other documents. The matters discussed in this memorandum are limited to those specifically detailed in the memorandum and are subject to any limitations or assumptions specially set out.

2. Transport Environment

2.1 Surrounding Networks

Cooma Hospital is located on Bent Street, between Victoria Street, Campbell Street and Bombala Street. The posted speed limit for all roads surrounding the hospital is 50kmph. There are footpaths in the verges of Bent Street, Victoria Street and Bombala Street.



Map 1 Locality Plan (Source: Google Maps)

2.2 On-Street Parking

There is parallel parking on both sides of Bombala Street and Bent Street with no time limit. There is 45-degree, front in parking on both sides of Victoria Street with no time limit.

2.3 Site Access

The entrance to the main carpark and emergency drop-off is located near the main entrance to the hospital on Bent Street. The main carpark accesses a service road that connects to Bombala Street and Campbell Street. Ambulances are garaged on the service road, near the Bombala Street exit. There is some staff carparking to the west of the hospital buildings with driveway access from Bombala Street and some more staff carparking to the north of the main building with driveway access from Victoria Street.

3. Proposal

3.1 Structures

Health Infrastructure NSW proposes to build twelve key worker accommodation units for current hospital staff. Twelve single storey units over two floors with a shared common area will be erected on vacant land to the east of the hospital site parallel to Bombala Street. It is currently proposed that each unit will be prefabricated, floated to site and craned onto a concrete piers or a slab that has been cast in situ.

3.2 Vehicle Provisions

The key worker accommodation units represent a net increase of twelve occupants on the site. As the occupants shall be working on-site, any additional traffic movements will be negligible. Further, there is sufficient spare parking capacity available on-site and/or on the surrounding streets such that no additional car parking facilities are required.

3.3 Pedestrian and Cyclist Provisions

The new key worker accommodations block will have footpaths to existing internal and external footpath networks.

4. Transport Management During Construction

The contractor will liaise with and gain appropriate approvals from Snowy Monaro Regional Council before implementing the following:

- Road, lane or footpath closures
- Detours because of closures
- Construction vehicle activity in a public area
- Crane operation
- Temporary removal of on-street parking for the public

It is proposed that construction access be provided via the existing driveway into NSW Ambulance located on Bombala Street. Noting the existence of mature trees with low canopies, the exact location of the stabilised site access will need to be managed to avoid impacting tree roots with some pruning potentially required to provide adequate clearance for construction vehicles.

Any craneage will be conducted from Bombala Street where the truck will be parked against the kerb alongside the site and TTMs enacted to ensure safety of bystanders.

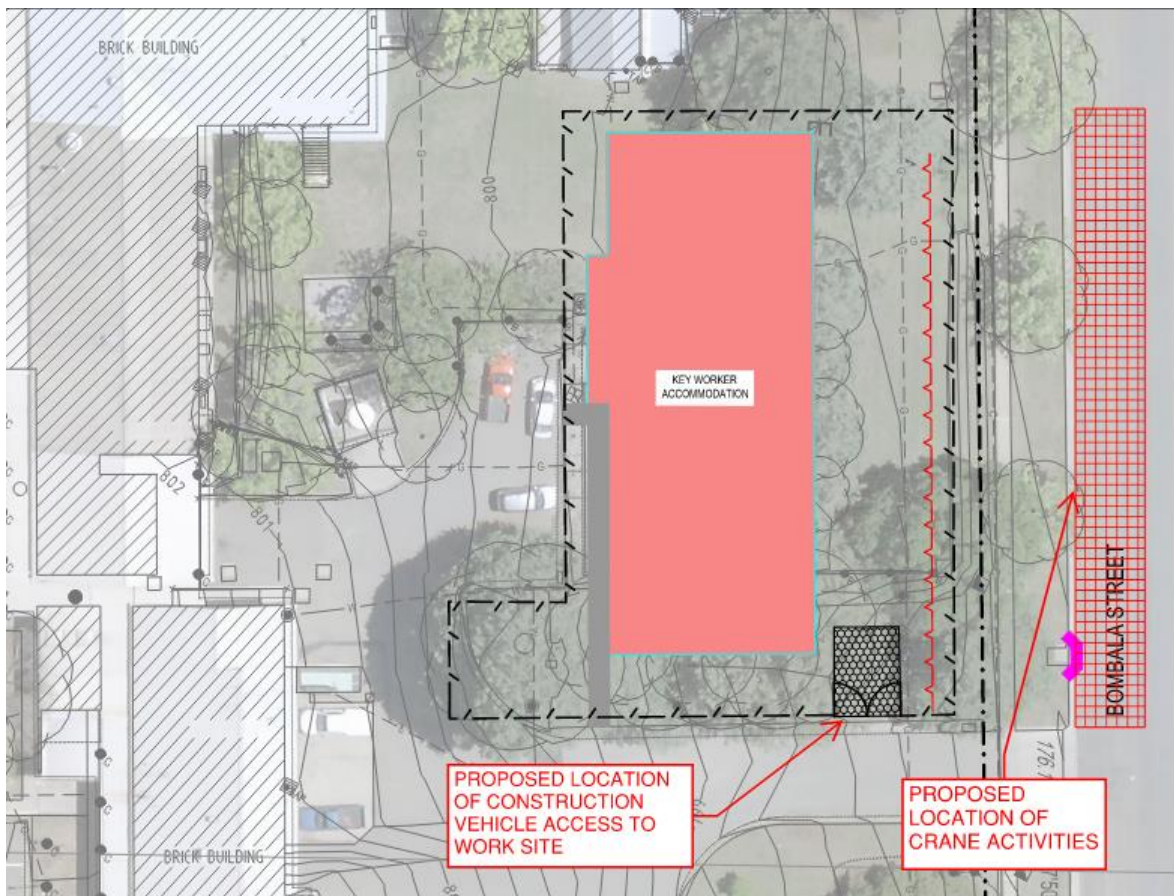


Figure 1 Construction Transport Access Diagram (Source: GHD Erosion & Sediment Control Plan)

5. Design Standards

5.1 Pedestrian Facilities

All new onsite pedestrian facilities are to be designed in accordance with:

- AS1428.1 - Design for Access and Mobility Part 1: New Building Works
- Snowy Monaro Regional Council Development Control Code

5.2 Temporary Traffic Works

All construction works interfering with public spaces are to be managed in accordance with:

- Transport for NSW – Traffic Control at Work Sites Technical Manual (TCAWS)
- Snowy Monaro Regional Council guidance and approval

Tristan Yeats

Regards

Tristan Yeats
Senior Civil Engineer

This Technical Memorandum is provided as an interim output under our agreement with . It is provided to foster discussion in relation to technical matters associated with the project and should not be relied upon in any way.